

043509

RECEIVED  
LARAMIE COUNTY  
CHEYENNE, WY.

CERTIFIED LAND CORNER RECORDATION '88 MAY 5 PM 1 30

DESCRIPTION OF CORNER EVIDENCE FOUND, AND ORIGINAL RECORD (if known)  
Found sandstone 4"x12" projecting 6" above ground w/no visible markings.

S.3 S.2  
S.10 S.11  
T.18N., R.67W.  
6th P.M.

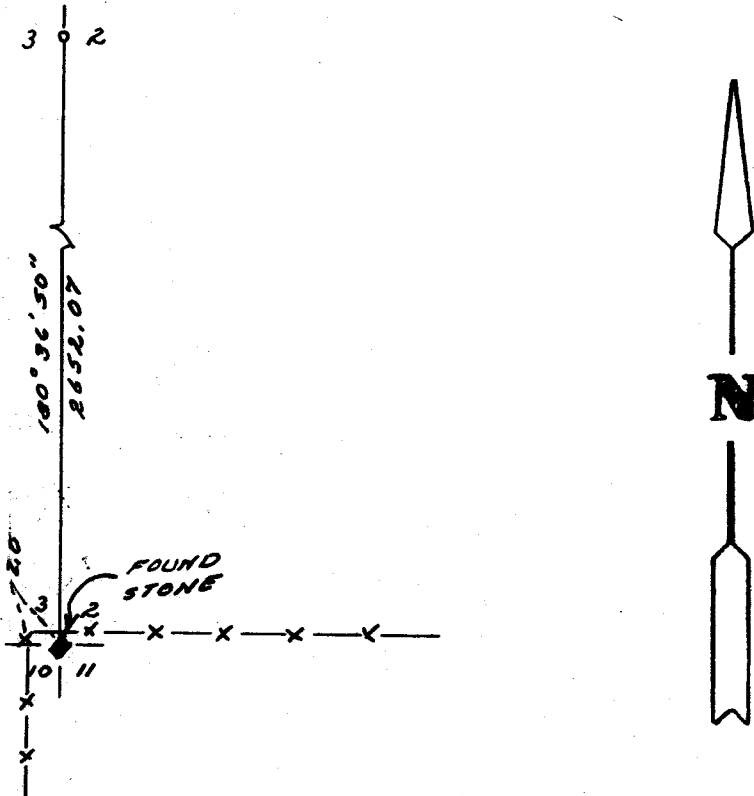
G.L.O. Record: Set a sandstone 24"x12"x4".

DESCRIPTION OF MONUMENT AND ACCESSORIES ESTABLISHED  
TO PERPETUATE THE ORIGINAL LOCATION OF THIS CORNER:

At the corner: Not remonumented.

Accessories: See ties below.

SKETCH, WITH COURSE AND DISTANCE TO ADJACENT CORNER IF DETERMINED IN THIS SURVEY.  
(May Sketch or Paste Reproduction on Reverse Side.)



I, John A. Steil certify that I have carefully performed or reviewed the work done on the diagrammed corner as reported on this recordation form and approve the same.

John A. Steil  
Signature of Surveyor

L.S. 2500  
Registration No.

STATE OF WYOMING,  
Office of Clerk and Recorder,  
County of Laramie

This "corner record" was filed for record on the 5th day of May, 1988, was noted on the cross-index plat and is assigned page No. 2025 in book No. 4359

Janet C. Whitcomb  
County Official

Cross Index No.	<u>E-17</u>	T.	<u>18N</u>	R.	<u>67W</u>	Mer.	<u>6th</u>
		T.		R.		Mer.	
		T.		R.		Mer.	
		T.		R.		Mer.	
		T.		R.		Mer.	
		T.		R.		Mer.	
		T.		R.		Mer.	

BOOK 1259

2025